



### **Substantial hot water savings, free from the sun.**

All homes within The Green will be encouraged to have solar hot water systems and the entire Village is designed to allow correct east-west homesite orientation to enable home living areas to face north.

Satterley, in partnership with Synergy, will be working with the builders to assist home buyers to build more energy-efficient homes. This will mean annual energy cost savings to residents.

### **The grass isn't all that's greener on this side.**

Beyond the use of particularly hardy lawn, trees and flowering native plants in the eleven parks, The Green will also benefit from being a Transport Oriented Development.

Essentially this means that the village is designed to reduce the reliance on private cars for local trips. The increased reliance on bus and train travel will lead to an estimated reduction of 1.4 tonnes of carbon dioxide per household, per annum, or about 20 percent of average emissions.

### **The Green even has its own Farm and Training Shed.**

A special area of land is being set aside temporarily to provide residents of The Green with the opportunity to grow their own fruit and vegetables and share their knowledge and experience, especially with the young.



There will also be provision for those involved in The Shed, Brighton's innovative job training initiative, to take advantage of learning opportunities on The Farm.

Already a large number of Brighton residents live and work in the immediate area.

For more details of the wide range of initiatives simply visit the website at [www.satterley.com.au](http://www.satterley.com.au) or just telephone 9562 0422 for a copy of The Green Book.



**THE**



**GREEN**

WHAT ELSE WOULD YOU CALL THE STATE'S MOST ENVIRONMENT FRIENDLY NEW COASTAL COMMUNITY?

# Welcome to Australia's leading



The Green is the fourth village of Brighton, the state's most successful new coastal community.

Many developers are now using the language and imagery of environmental friendliness.

But Satterley Property Group is creating an entirely new infrastructure and systems-based approach to delivering water and energy savings, on a scale never before achieved.

The Green isn't just talking about environmental friendliness, it's redefining what the term should mean.

*Nigel Satterley*

Nigel Satterley A.M.  
Managing Director and Chief Executive.  
Satterley Property Group



There are now clear opportunities to address the causes of climate change, wastage and pollution and to create more responsible, happier and sustainable residential communities.



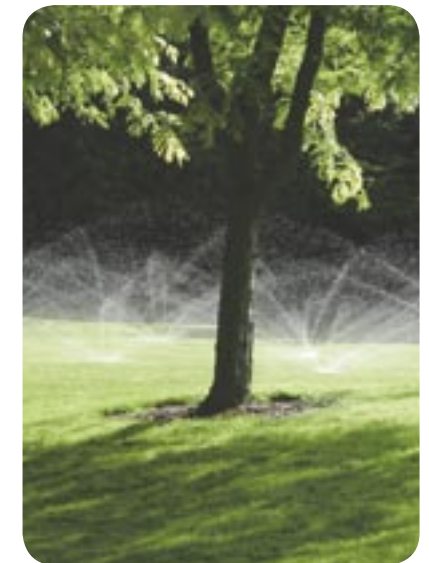
This document outlines briefly how The Green at Brighton is working imaginatively to achieve this.

## **Drinking water for people, not plants.**

The Green will have Australia's first two-stream, Waterwise residential water supply system which reduces the consumption of drinking water by a massive 56 percent per annum. Five communal bores draw from sustainable reserves of ground water 30 to 65 metres below the surface of the innovative village.

The reserves are replenished by run-off within The Green and from the infiltration of rainwater.

The state's most Waterwise system ensures that only ground water is reticulated to all gardens, verges



and the eleven parks within The Green, as required, except when its central Weather Station identifies that there is sufficient soil moisture to eliminate the need for watering on that day. There's nothing like it anywhere else in Australia.

# green community.

## Less drinking water use means fewer greenhouse gas emissions.

The use of safe, clean, non-drinking water will result in fewer greenhouse gas emissions.

What's more, the system will actually create net ground water gains of approximately 174,000,000 litres of ground water each year.

That's enough to fill around 174 Olympic-size swimming pools, annually.

## Residents will be saving money as well as the local and state environment.

The Green's 1,500 households will pay a flat fee each year

which covers all the ground water used and maintenance of the high-technology reticulation system and shared bores. The flat fee will be less than the average cost of watering the garden with drinking water.

## Saving money and the environment with Greenpower, from renewable sources.

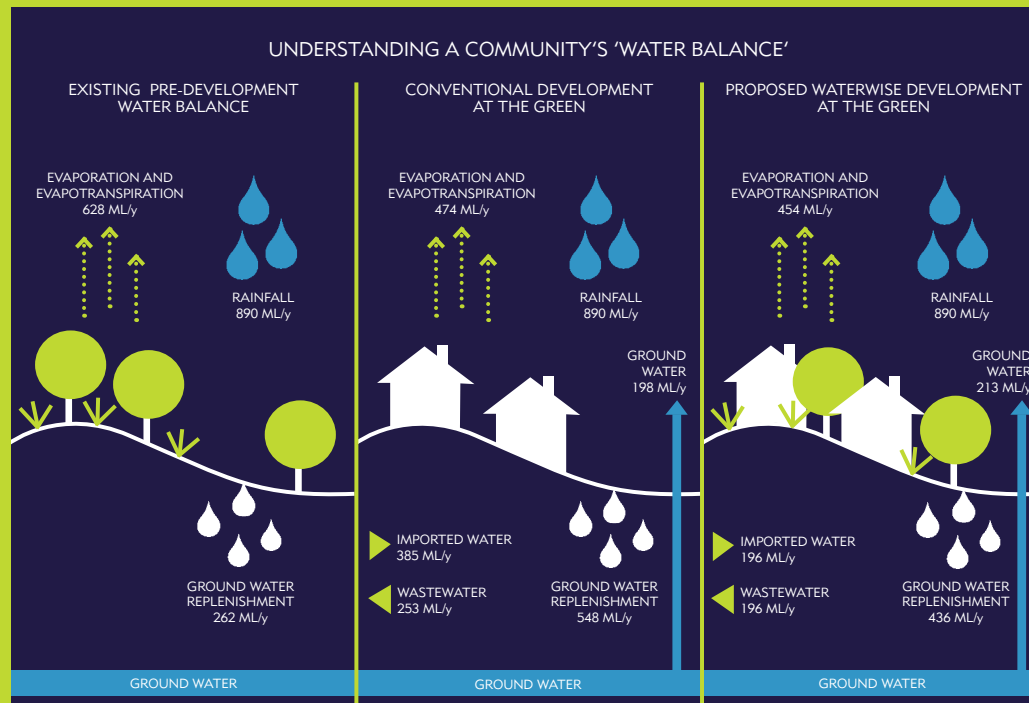
For a three-year period, residents of The Green will have the provision of Greenpower to their homes subsidised by the Satterley Property Group.

The value of this contribution is around \$650 per household. The initiative will result in a huge saving of up to 80 percent on greenhouse gases produced, per household.

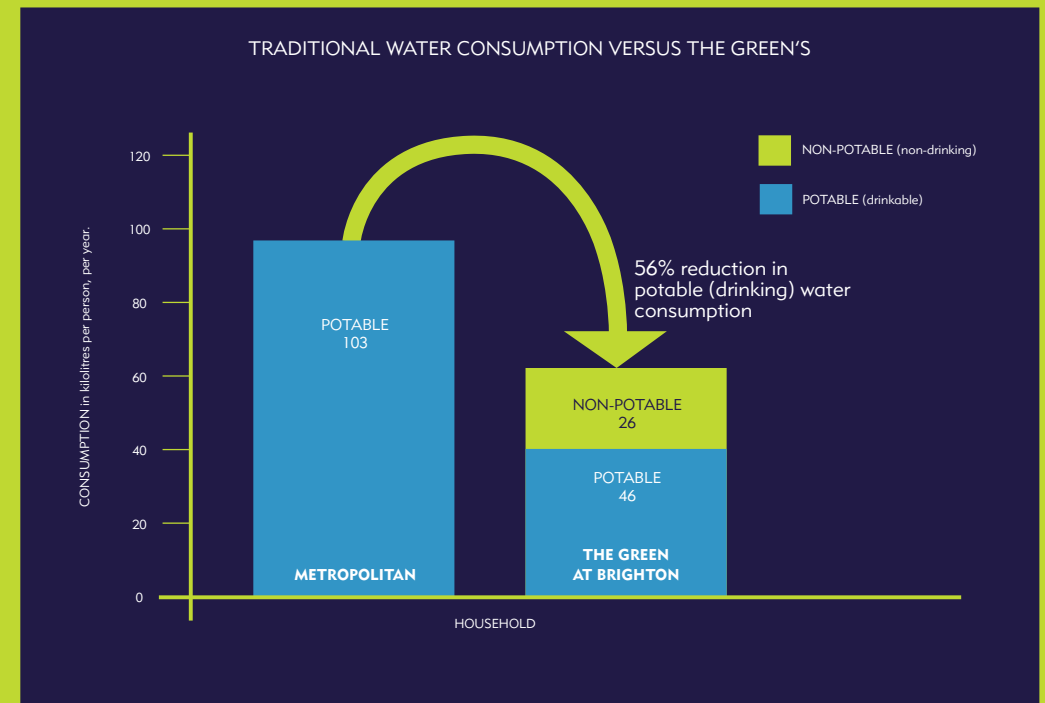
## The Green's '5-star Plus' energy efficient housing will save residents more money.

Satterley Property Group is working with the state's leading builders to ensure that each and every one of the 1,500 homes in The Green has a minimum energy-efficiency rating of 5-stars.

These quality home builders have committed to offering homes which take full advantage of the east-west solar-oriented alignment of each homesite and provides the design, cross-ventilation, insulation, fittings and construction materials which enable a home to achieve the exceptionally high, energy-efficiency status The Green demands.



See details on the back page.



See details on the back page.